

# TopTherm wall-mounted cooling units "Blue e"



Accessories for climate control Page 454 Therm software Page 474 RiDiag software Page 474

### Temperature control:

- e-Comfort controller (factory setting +35°C)

### Protection category IP to IEC 60 529:

- External circuit IP 34
- Internal circuit IP 54

### Supply includes:

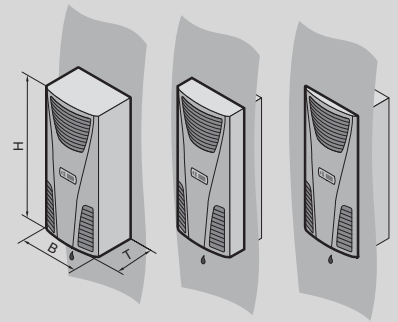
- Nano-coated condenser
- Fully wired ready for connection (plug-in terminal strip)
- Drilling template
- Assembly parts

### Approvals:

Available on the Internet

### Performance diagrams:

Available on the Internet



## Output class 500 W

Model No.	Packs of	3303.500	3303.510	3303.600	Page
Material	Sheet steel	■	■	-	
	Stainless steel	-	-	■	
Colour	RAL 7035	■	■	-	
<b>Total cooling output 50 Hz L35 L35 to DIN EN 14511 kW</b>		<b>0.55</b>	-	<b>0.55</b>	
Total cooling output 50/60 Hz L35 L35 kW		0.55 / 0.66	0.66	0.55 / 0.66	
Total cooling output 50/60 Hz L35 L50 kW		0.33 / 0.4	0.4	0.33 / 0.4	
Rated operating voltage V, ~, Hz		230, 1~, 50/60	115, 1~, 60	230, 1~, 50/60	
Width (B) mm		280	280	280	
Height (H) mm		550	550	550	
Depth (T) mm		210	210	210	
Rated current max. A		2.6 / 2.6	5.7	2.6 / 2.6	
Start-up current A		5.1 / 6.4	11.5	5.1 / 6.4	
Pre-fuse A		10	10	10	
Transformer circuit-breaker		-	-	-	
Toroidal transformer (external) Ø x D		-	-	-	
Power consumption P <sub>el</sub> 50/60 Hz L35 L35 kW		0.39 / 0.41	0.5	0.39 / 0.41	
Power consumption P <sub>el</sub> 50/60 Hz L35 L50 kW		0.45 / 0.42	0.53	0.45 / 0.42	
Operating temperature range		+10°C...+55°C	+10°C...+55°C	+10°C...+55°C	
Operating temperature (max.) 60 Hz		-	-	-	
Setting range		+20°C...+55°C	+20°C...+55°C	+20°C...+55°C	
Energy efficiency ratio (EER) 50 Hz L35 L35 to DIN EN 14511		1.4	1.4	1.4	
Refrigerant g		R134a, 170	R134a, 170	R134a, 170	
Permissible operating pressure (p. max.) bar		28	28	28	
Air throughput of fans (unimpeded air flow), internal circuit/external circuit m <sup>3</sup> /h		265 / 315	280 / 345	265 / 315	
Weight kg		17.0	17.0	17.0	

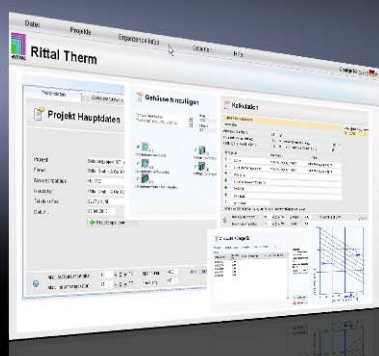
<b>Accessories</b>					
Filter mats	3 pc(s).	3286.300	3286.300	3286.300	454
Metal filters	1 pc(s).	3286.310	3286.310	3286.310	455
Door-operated switch	1 pc(s).	4127.010	4127.010	4127.010	755
Interface board	1 pc(s).	3124.200	3124.200	3124.200	470

# TopTherm wall-mounted cooling units "Blue e"

## Output class 750 W

Model No.	Packs of	3361.500	3361.510	3361.540	3361.600	Page
Material	Sheet steel	■	■	■	–	
	Stainless steel	–	–	–	■	
Colour	RAL 7035	■	■	■	–	
<b>Total cooling output 50 Hz L35 L35 to DIN EN 14511 kW</b>		<b>0.85</b>	–	<b>0.85</b>	<b>0.85</b>	
Total cooling output 50/60 Hz L35 L35 kW		0.85 / 0.89	0.89	0.85 / 0.89	0.85 / 0.89	
Total cooling output 50/60 Hz L35 L50 kW		0.67 / 0.67	0.67	0.67 / 0.67	0.67 / 0.67	
Rated operating voltage V, ~, Hz		230, 1~, 50/60	115, 1~, 60	400, 2~, 50/60	230, 1~, 50/60	
Width (B) mm		280	280	280	280	
Height (H) mm		550	550	550	550	
Depth (T) mm		280	280	280	280	
Rated current max. A		2.7 / 2.7	5.3	1.2 / 1.4	2.7 / 2.7	
Start-up current A		6 / 9.6	12	3.1 / 3.3	6 / 9.6	
Pre-fuse A		10	10	–	10	
Transformer circuit-breaker A		–	–	6.3...10	–	
Toroidal transformer (external) Ø x D mm		–	–	126 x 65	–	
Power consumption P <sub>el</sub> 50/60 Hz L35 L35 kW		0.4 / 0.43	0.55	0.4 / 0.43	0.4 / 0.43	
Power consumption P <sub>el</sub> 50/60 Hz L35 L50 kW		0.47 / 0.5	0.66	0.47 / 0.5	0.47 / 0.5	
Operating temperature range		+10°C...+55°C	+10°C...+55°C	+10°C...+55°C	+10°C...+55°C	
Operating temperature (max.) 60 Hz		+53°C	+52°C	+53°C	+53°C	
Setting range		+20°C...+55°C	+20°C...+55°C	+20°C...+55°C	+20°C...+55°C	
Energy efficiency ratio (EER) 50 Hz L35 L35 to DIN EN 14511		2.08	1.59	2.08	2.08	
Refrigerant g		R134a, 280	R134a, 260	R134a, 280	R134a, 280	
Permissible operating pressure (p. max.) bar		28	28	28	28	
Air throughput of fans (unimpeded air flow), internal circuit/external circuit m <sup>3</sup> /h		230 / 550	230 / 625	230 / 550	230 / 550	
Weight kg		22.0	22.0	22.0	22.0	
<b>Accessories</b>						
Filter mats	3 pc(s).	3286.300	3286.300	3286.300	3286.300	454
Metal filters	1 pc(s).	3286.310	3286.310	3286.310	3286.310	455
Door-operated switch	1 pc(s).	4127.010	4127.010	4127.010	4127.010	755
Interface board	1 pc(s).	3124.200	3124.200	3124.200	3124.200	470

Accessories



Therm software

see page 474

# TopTherm wall-mounted cooling units "Blue e"



Accessories for climate control Page 454 Therm software Page 474 RiDiag software Page 474

### Temperature control:

- e-Comfort controller (factory setting +35°C)

### Protection category IP to IEC 60 529:

- External circuit IP 34
- Internal circuit IP 54

### Supply includes:

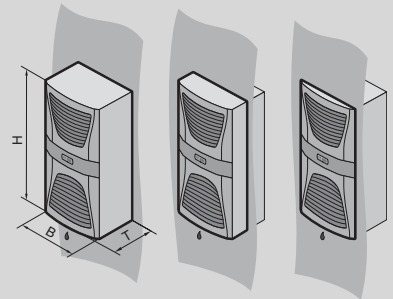
- Nano-coated condenser
- Integral electric condensate evaporation
- Fully wired ready for connection (plug-in terminal strip)
- Drilling template
- Assembly parts

### Approvals:

Available on the Internet

### Performance diagrams:

Available on the Internet



## Output class 1000 W

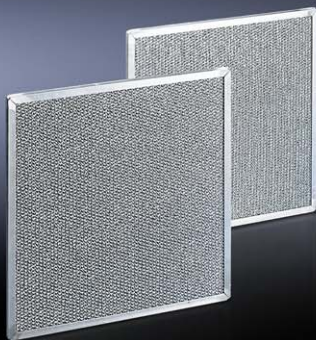
Model No.	Packs of	3304.500	3304.510	3304.540	3304.600	3304.640	Page
Material	Sheet steel	■	■	■	-	-	
	Stainless steel	-	-	-	■	■	
Colour	RAL 7035	■	■	■	-	-	
<b>Total cooling output 50 Hz L35 L35 to DIN EN 14511 kW</b>		<b>1.1</b>	<b>1.1</b>	<b>1.1</b>	<b>1.1</b>	<b>1.1</b>	
Total cooling output 50/60 Hz L35 L35 kW		1.1 / 1.25	1.1 / 1.25	1.1 / 1.25	1.1 / 1.25	1.1 / 1.25	
Total cooling output 50/60 Hz L35 L50 kW		0.91 / 0.9	0.91 / 0.9	0.98 / 0.9	0.91 / 0.9	0.98 / 0.9	
Rated operating voltage V, ~, Hz		230, 1~, 50/60	115, 1~, 50/60	400, 3~, 50 460, 3~, 60	230, 1~, 50/60	400, 3~, 50 460, 3~, 60	
Width (B) mm		400	400	400	400	400	
Height (H) mm		950	950	950	950	950	
Depth (T) mm		260	260	260	260	260	
Rated current max. A		3.9 / 4.3	8 / 8.8	2.2 / 2.1	5.4 / 5	2.8 / 2.4	
Start-up current A		12 / 14	26 / 28	11.5 / 12.7	12 / 14	11.5 / 12.7	
Pre-fuse A		10	-	-	10	-	
Transformer circuit-breaker A		-	11...16	-	-	-	
Motor circuit-breaker A		-	-	6.3...10	-	6.3...10	
Power consumption P <sub>el</sub> 50/60 Hz L35 L35 kW		0.64 / 0.68	0.64 / 0.68	0.64 / 0.79	0.64 / 0.68	0.64 / 0.79	
Power consumption P <sub>el</sub> 50/60 Hz L35 L50 kW		0.71 / 0.81	0.71 / 0.81	0.73 / 0.9	0.71 / 0.81	0.73 / 0.9	
Operating temperature range		+10°C...+55°C	+10°C...+55°C	+10°C...+55°C	+10°C...+55°C	+10°C...+55°C	
Setting range		+20°C...+55°C	+20°C...+55°C	+20°C...+55°C	+20°C...+55°C	+20°C...+55°C	
Energy efficiency ratio (EER) 50 Hz L35 L35 to DIN EN 14511		1.83	1.83	1.72	1.83	1.72	
Refrigerant g		R134a, 325	R134a, 325	R134a, 325	R134a, 325	R134a, 325	
Permissible operating pressure (p. max.) bar		28	28	28	28	28	
Air throughput of fans (unimpeded air flow), internal circuit/external circuit m <sup>3</sup> /h		600 / 900	600 / 900	600 / 900	600 / 900	600 / 900	
Weight kg		39.0	44.0	40.0	39.0	40.0	
<b>Accessories</b>							
Filter mats		3 pc(s).	3286.400	3286.400	3286.400	3286.400	454
Metal filters		1 pc(s).	3286.410	3286.410	3286.410	3286.410	455
Door-operated switch		1 pc(s).	4127.010	4127.010	4127.010	4127.010	755

# TopTherm wall-mounted cooling units "Blue e"

## Output class 1500 W

Model No.	Packs of	3305.500	3305.510	3305.540	3305.600	3305.640	Page
Material	Sheet steel	■	■	■	–	–	
	Stainless steel	–	–	–	■	■	
Colour	RAL 7035	■	■	■	–	–	
<b>Total cooling output 50 Hz L35 L35 to DIN EN 14511 kW</b>		<b>1.6</b>	<b>1.6</b>	<b>1.6</b>	<b>1.6</b>	<b>1.6</b>	
Total cooling output 50/60 Hz L35 L35 kW		1.6 / 1.76	1.6 / 1.76	1.6 / 1.61	1.6 / 1.76	1.6 / 1.61	
Total cooling output 50/60 Hz L35 L50 kW		1.25 / 1.37	1.25 / 1.37	1.33 / 1.35	1.25 / 1.37	1.33 / 1.35	
Rated operating voltage V, ~, Hz		230, 1~, 50/60	115, 1~, 50/60	400, 3~, 50 460, 3~, 60	230, 1~, 50/60	400, 3~, 50 460, 3~, 60	
Width (B) mm		400	400	400	400	400	
Height (H) mm		950	950	950	950	950	
Depth (T) mm		260	260	260	260	260	
Rated current max. A		5.5 / 5.8	11.5 / 12.5	2.5 / 2.8	5.5 / 5.8	2.5 / 2.8	
Start-up current A		12 / 14	26 / 28	12.2 / 11.3	12 / 14	12.2 / 11.3	
Pre-fuse A		16	–	–	16	–	
Transformer circuit-breaker A		–	14...20	–	–	–	
Motor circuit-breaker A		–	–	6.3...10	–	6.3...10	
Power consumption P <sub>el</sub> 50/60 Hz L35 L35 kW		0.87 / 0.98	0.87 / 0.98	0.9 / 1.08	0.87 / 0.98	0.9 / 1.08	
Power consumption P <sub>el</sub> 50/60 Hz L35 L50 kW		1.03 / 1.15	1.03 / 1.15	1.06 / 1.25	1.03 / 1.15	1.06 / 1.25	
Operating temperature range		+10°C...+55°C	+10°C...+55°C	+10°C...+55°C	+10°C...+55°C	+10°C...+55°C	
Setting range		+20°C...+55°C	+20°C...+55°C	+20°C...+55°C	+20°C...+55°C	+20°C...+55°C	
Energy efficiency ratio (EER) 50 Hz L35 L35 to DIN EN 14511		1.83	1.83	1.83	1.83	1.83	
Refrigerant g		R134a, 500	R134a, 500	R134a, 500	R134a, 500	R134a, 500	
Permissible operating pressure (p. max.) bar		28	28	28	28	28	
Air throughput of fans (unimpeded air flow), internal circuit/external circuit m <sup>3</sup> /h		800 / 900	800 / 900	800 / 900	800 / 900	800 / 900	
Weight kg		41.0	46.0	42.0	41.0	42.0	
<b>Accessories</b>							
Filter mats	3 pc(s).	3286.400	3286.400	3286.400	3286.400	3286.400	454
Metal filters	1 pc(s).	3286.410	3286.410	3286.410	3286.410	3286.410	455
Door-operated switch	1 pc(s).	4127.010	4127.010	4127.010	4127.010	4127.010	755

Accessories



## Metal filters

see page 455

# TopTherm wall-mounted cooling units "Blue e"



Accessories for climate control Page 454 Therm software Page 474 RiDiag software Page 474

### Temperature control:

- e-Comfort controller (factory setting +35°C)

### Protection category IP to IEC 60 529:

- External circuit IP 34
- Internal circuit IP 54

### Supply includes:

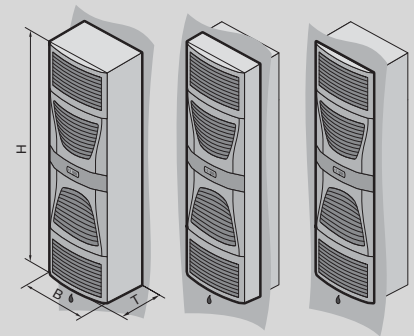
- Nano-coated condenser
- Integral electric condensate evaporation
- Fully wired ready for connection (plug-in terminal strip)
- Drilling template
- Assembly parts

### Approvals:

Available on the Internet

### Performance diagrams:

Available on the Internet



## Output class 2000 W

Model No.	Packs of	3328.500	3328.510	3328.540	3328.600	3328.640	Page
Material	Sheet steel	■	■	■	-	-	
	Stainless steel	-	-	-	■	■	
Colour	RAL 7035	■	■	■	-	-	
<b>Total cooling output 50 Hz L35 L35 to DIN EN 14511 kW</b>		<b>2.2</b>	<b>2.2</b>	<b>2.2</b>	<b>2.2</b>	<b>2.2</b>	
Total cooling output 50/60 Hz L35 L35 kW		2.2 / 2.56	2.2 / 2.56	2.2 / 2.55	2.2 / 2.56	2.2 / 2.55	
Total cooling output 50/60 Hz L35 L50 kW		1.82 / 1.95	1.82 / 1.95	1.65 / 1.89	1.82 / 1.95	1.65 / 1.89	
Rated operating voltage V, ~, Hz		230, 1~, 50/60	115, 1~, 50/60	400, 3~, 50/460, 3~, 60	230, 1~, 50/60	400, 3~, 50/460, 3~, 60	
Width (B) mm		400	400	400	400	400	
Height (H) mm		1580	1580	1580	1580	1580	
Depth (T) mm		295	295	295	295	295	
Rated current max. A		6.1 / 6.6	13.4 / 14.8	2.8 / 3.3	6.1 / 6.6	2.8 / 3.3	
Start-up current A		20 / 22	40 / 38	6.8 / 7.8	20 / 22	6.8 / 7.8	
Pre-fuse A		16	-	-	16	-	
Transformer circuit-breaker A		-	18...25	-	-	-	
Motor circuit-breaker A		-	-	6.3...10	-	6.3...10	
Power consumption P <sub>el</sub> 50/60 Hz L35 L35 kW		0.91 / 1.03	0.91 / 1.03	0.92 / 1.15	0.91 / 1.03	0.92 / 1.15	
Power consumption P <sub>el</sub> 50/60 Hz L35 L50 kW		1.06 / 1.23	1.06 / 1.23	1.15 / 1.4	1.06 / 1.23	1.15 / 1.4	
Operating temperature range		+10°C...+55°C	+10°C...+55°C	+10°C...+55°C	+10°C...+55°C	+10°C...+55°C	
Setting range		+20°C...+55°C	+20°C...+55°C	+20°C...+55°C	+20°C...+55°C	+20°C...+55°C	
Energy efficiency ratio (EER) 50 Hz L35 L35 to DIN EN 14511		2.4	2.4	2.4	2.4	2.4	
Refrigerant g		R134a, 950	R134a, 950	R134a, 950	R134a, 950	R134a, 950	
Permissible operating pressure (p. max.) bar		28	28	28	28	28	
Air throughput of fans (unimpeded air flow), internal circuit/external circuit m <sup>3</sup> /h		980 / 980	980 / 980	900 / 900	980 / 980	900 / 900	
Weight kg		66.0	73.0	67.0	66.0	67.0	
<b>Accessories</b>							
Filter mats	3 pc(s).	3286.400	3286.400	3286.400	3286.400	3286.400	454
Metal filters	1 pc(s).	3286.410	3286.410	3286.410	3286.410	3286.410	455

# TopTherm wall-mounted cooling units "Blue e"

## Output class 2500 W

Model No.	Packs of	3329.500	3329.510	3329.540	3329.600	3329.640	Page
Material	Sheet steel	■	■	■	-	-	
	Stainless steel	-	-	-	■	■	
Colour	RAL 7035	■	■	■	-	-	
<b>Total cooling output 50 Hz L35 L35 to DIN EN 14511 kW</b>		<b>2.55</b>	<b>2.55</b>	<b>2.55</b>	<b>2.55</b>	<b>2.55</b>	
Total cooling output 50/60 Hz L35 L35 kW		2.55 / 2.71	2.55 / 2.71	2.55 / 2.75	2.55 / 2.71	2.55 / 2.75	
Total cooling output 50/60 Hz L35 L50 kW		1.89 / 1.97	1.89 / 1.97	1.95 / 2	1.89 / 1.97	1.95 / 2	
Rated operating voltage V, ~, Hz		230, 1~, 50/60	115, 1~, 50/60	400, 3~, 50/460, 3~, 60	230, 1~, 50/60	400, 3~, 50/460, 3~, 60	
Width (B) mm		400	400	400	400	400	
Height (H) mm		1580	1580	1580	1580	1580	
Depth (T) mm		295	295	295	295	295	
Rated current max. A		8.2 / 9.3	17 / 22	3.7 / 3.8	8.2 / 9.3	3.7 / 3.8	
Start-up current A		20 / 24	44 / 42	6.8 / 7.6	20 / 24	6.8 / 7.6	
Pre-fuse A		16	-	-	16	-	
Transformer circuit-breaker A		-	18...25	-	-	-	
Motor circuit-breaker A		-	-	6.3...10	-	6.3...10	
Power consumption P <sub>el</sub> 50/60 Hz L35 L35 kW		1.21 / 1.35	1.21 / 1.35	1.19 / 1.39	1.21 / 1.35	1.19 / 1.39	
Power consumption P <sub>el</sub> 50/60 Hz L35 L50 kW		1.41 / 1.64	1.41 / 1.64	1.45 / 1.75	1.41 / 1.64	1.45 / 1.75	
Operating temperature range		+10°C...+55°C	+10°C...+55°C	+10°C...+55°C	+10°C...+55°C	+10°C...+55°C	
Setting range		+20°C...+55°C	+20°C...+55°C	+20°C...+55°C	+20°C...+55°C	+20°C...+55°C	
Energy efficiency ratio (EER) 50 Hz L35 L35 to DIN EN 14511		2.11	2.11	2.11	2.11	2.11	
Refrigerant g		R134a, 950	R134a, 950	R134a, 950	R134a, 950	R134a, 950	
Permissible operating pressure (p. max.) bar		28	28	28	28	28	
Air throughput of fans (unimpeded air flow), internal circuit/external circuit m <sup>3</sup> /h		1230 / 1230	1230 / 1230	1200 / 1200	1230 / 1230	1200 / 1200	
Weight kg		69.0	76.0	70.0	69.0	70.0	
<b>Accessories</b>							
Filter mats	3 pc(s).	3286.400	3286.400	3286.400	3286.400	3286.400	454
Metal filters	1 pc(s).	3286.410	3286.410	3286.410	3286.410	3286.410	455

## Output class 4000 W

Model No.	Packs of	3332.540	3332.640	Page
Material	Sheet steel	■	-	
	Stainless steel	-	■	
Colour	RAL 7035	■	-	
<b>Total cooling output 50 Hz L35 L35 to DIN EN 14511 kW</b>		<b>3.95</b>	<b>3.95</b>	
Total cooling output 50/60 Hz L35 L35 kW		3.95 / 4.35	3.95 / 4.35	
Total cooling output 50/60 Hz L35 L50 kW		3.02 / 3.52	3.02 / 3.52	
Rated operating voltage V, ~, Hz		400, 3~, 50/460, 3~, 60	400, 3~, 50/460, 3~, 60	
Width (B) mm		500	500	
Height (H) mm		1580	1580	
Depth (T) mm		340	340	
Rated current max. A		4.2 / 4.2	4.2 / 4.2	
Start-up current A		9.2 / 11	9.2 / 11	
Pre-fuse		-	-	
Transformer circuit-breaker		-	-	
Motor circuit-breaker A		6.3...10	6.3...10	
Power consumption P <sub>el</sub> 50/60 Hz L35 L35 kW		1.6 / 2	1.6 / 2	
Power consumption P <sub>el</sub> 50/60 Hz L35 L50 kW		1.87 / 2.34	1.87 / 2.34	
Operating temperature range		+10°C...+55°C	+10°C...+55°C	
Setting range		+20°C...+55°C	+20°C...+55°C	
Energy efficiency ratio (EER) 50 Hz L35 L35 to DIN EN 14511		2.47	2.47	
Refrigerant g		R134a, 2995	R134a, 2995	
Permissible operating pressure (p. max.) bar		28	28	
Air throughput of fans (unimpeded air flow), internal circuit/external circuit m <sup>3</sup> /h		1500 / 2000	1500 / 2000	
Weight kg		91.0	91.0	
<b>Accessories</b>				
Filter mats	3 pc(s).	3286.400	3286.400	454
Metal filters	1 pc(s).	3286.410	3286.410	455

# TopTherm wall-mounted cooling units "Blue e", slimline



Accessories for climate control Page 454 Therm software Page 474 RiDiag software Page 474

#### Temperature control:

- e-Comfort controller (factory setting +35°C)

#### Protection category IP to IEC 60 529:

- External circuit IP 34
- Internal circuit IP 54

#### Supply includes:

- Nano-coated condenser
- Integral electric condensate evaporation
- Fully wired ready for connection (plug-in terminal strip)
- Drilling template
- Assembly parts

#### Approvals:

Available on the Internet

#### Performance diagrams:

Available on the Internet

## Output class 1500 W

Model No.	Packs of	3366.500	3366.540	Page
Material	Sheet steel	■	■	
Colour	RAL 7035	■	■	
<b>Total cooling output 50 Hz L35 L35 to DIN EN 14511 kW</b>		<b>1.6</b>	<b>1.6</b>	
Total cooling output 50/60 Hz L35 L35 kW		1.6 / 1.6	1.6 / 1.6	
Total cooling output 50/60 Hz L35 L50 W		1.15 / 1.2	1.08 / 1.18	
Rated operating voltage V, ~, Hz		230, 1~, 50/60	400, 3~, 50 460, 3~, 60	
Width mm		435	435	
Height mm		1590	1590	
Depth mm		205	205	
Rated current max. A		6.7 / 6.9	2.7 / 2.9	
Start-up current A		22 / 24	8 / 8.8	
Pre-fuse A		10	-	
Transformer circuit-breaker		-	-	
Motor circuit-breaker A		-	6.3...10	
Power consumption P <sub>el</sub> 50/60 Hz L35 L35 kW		0.84 / 0.97	0.9 / 1.05	
Power consumption P <sub>el</sub> 50/60 Hz L35 L50 kW		1.02 / 1.13	1.08 / 1.25	
Operating temperature range		+10°C...+55°C	+10°C...+55°C	
Setting range		+20°C...+55°C	+20°C...+55°C	
Energy efficiency ratio (EER) 50 Hz L35 L35 to DIN EN 14511		1.9	1.9	
Refrigerant g		R134a, 700	R134a, 700	
Permissible operating pressure (p. max.) bar		28	28	
Air throughput of fans (unimpeded air flow), internal circuit/external circuit m <sup>3</sup> /h		860 / 910	860 / 910	
Weight kg		45.0	46.0	

#### Accessories

Filter mats	3 pc(s).	3286.400	3286.400	454
Metal filters	1 pc(s).	3286.410	3286.410	455
Door-operated switch	1 pc(s).	4127.010	4127.010	755
Condensate hose	1 pc(s).	3301.612	3301.612	464