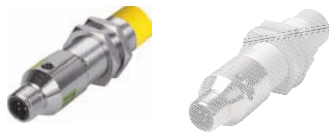
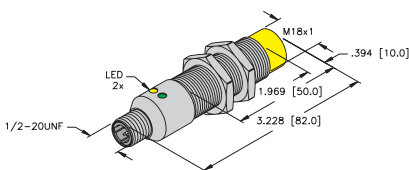
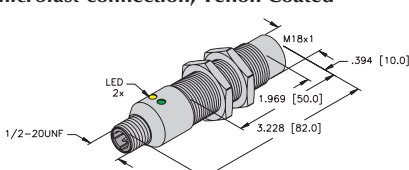
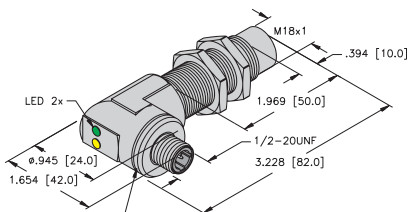


Inductive Sensors



Housing Style	Part Number	ID Number	Features	Sensing Range (mm)	Output	
18 mm - Nonembeddable, microfast® connection 	Ni 8-G18-ADZ30X2-B3331/S34	T4209100	WFI	8	2-Wire AC/DC Short-Circuit Protected	
	Ni 12U-G18-ADZ30X2-B3331	M4281413	Uprox	12		
	Ni 14-G18-ADZ30X2-B3331	T4205403	Ext. Range	14		
	18 mm - Nonembeddable, microfast connection, Teflon Coated 	Ni 10-G18-AZ3X-B3331	T4372192		10	2-Wire AC/DC
		Ni 8-G18-AZ3X-B3331	T4350588		8	
	18 mm - Nonembeddable, Teflon Coated, microfast Right Angle Connection 	Ni 8-GT18-ADZ30X2-B3331/S34	T4209101	WFI	8	2-Wire AC/DC Short-Circuit Protected
Ni 12U-GT18-ADZ30X2-B3331		M4281423	Uprox	12		
	Ni 8-GT18-ADZ30X2-B3431/S34	T4209201	WFI	8	2-Wire AC/DC Short-Circuit Protected	

For detailed sensor specifications see Section M.
 Normally Closed versions available upon request, consult factory.

Courtesy of Steven Engineering, Inc.-230 Ryan Way, South San Francisco, CA 94080-6370-Main Office: (650) 588-9200-Outside Local Area: (800) 258-9200-www.stevenengineering.com

D107 B1007

www.turck.us 1-800-544-7769 Fax: (763) 553-0708 TURCK Inc. Minneapolis, MN 55441



Output	Switching Freq. (Hz)	Operating Current (mA) VAC/VDC	Operating Temp. (°C)	Protection	Housing	Face	Power LED	Output LED	Mating Cordset	Wiring Diagram #	Wiring Diagrams
20-250 VAC 10-300 VDC	20	≤400/300	-25 to +70	IP 67	CPB	PA 12	GN	RD	KB 3T-*	1	<p>Diagram 1</p>
	20	≤400/300	-30 to +85	IP 67	CPB	PA 12	GN	YE	KB 3T-*	1	
	20	≤400/300	-25 to +70	IP 67	CPB	PA 12	GN	RD	KB 3T-*	1	
20-250 VAC	20	≤400/300	-25 to +70	IP 67	CPB	PA 12	N/A	RD	KB 3T-*	1	
	20	≤400/300	-25 to +70	IP 67	CPB	PA 12	N/A	YE	KB 3T-*	1	
20-250 VAC 10-300 VDC	20	≤400/300	-25 to +70	IP 67	TC	TC	GN	RD	KB 3T-*	1	
	20	≤400/300	-30 to +85	IP 67	TC	TC	GN	YE	KB 3T-*	1	
20-250 VAC 10-300 VDC	20	≤400/300	-25 to +70	IP 67	TC	TC	GN	RD	KB 3T-*	1	

Barrels

* Length in meters.

For material descriptions see page M36.